



ORTLES GUIDE 45
ORTLES GUIDE 35



ORTLES GUIDE 45



ORTLES GUIDE 35

Congratulations on your purchase of a Salewa backpack.
We want to be sure that you understand and utilize it in the best way.
On the following pages you will find a description of all functions
the backpack is offering.

FEATURES



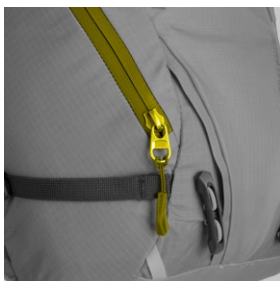
DETACHABLE AND ADJUSTABLE HOOD

If you want to save weight or to have more freedom of movement when climbing, you can remove the hood. Open the two buckles at the front and the two at the back of the hood.



ICE AXE FASTENING, WITH PROTECTION POCKET

Insert the axe pick into the dedicated pocket, fix the head in place with the bungee cord and tighten it using the cord stopper, if present. Fasten the shaft to the bungee loop using the dedicated buckle.



DIRECT ACCESS FROM THE SIDE

For quick and easy access into the main compartment without having to open the top.



COMPARTMENT FOR SHOVEL AND PROBE



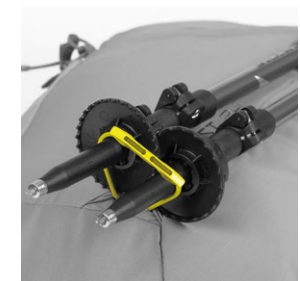
REMOVABLE HIPBELT PADDING

Hipbelt padding can be removed to save weight.



POLE FASTENING

Insert the pole tips through the strap/bungee cord loop until the plastic stopper. Fix the upper part hooking the dedicated buckle to the bungee loop.



FEATURES



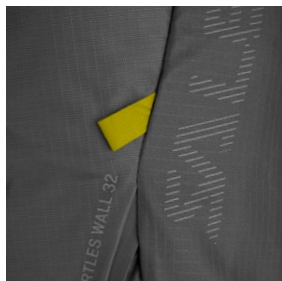
ROPE FIXATION WITH MAGNETIC BUCKLE

Position your rope in the upper part of the backpack and fix in place.



DETACHABLE STRAPS FOR DIAGONAL SKI-FIXATION

Double option: parallel ski fixation on the backpack sides, through compression straps; or diagonal front fixation with specific webbings.



ADDITIONAL LOOPS

Four versatile front loops for every fixation needs.



ROLLTOP

Adjust the volume of your backpack by rolling up excess fabric when you close it. This helps compress your load by making it less bulky and more compact.



PARALLEL SKI ATTACHMENT

Double option: parallel ski fixation on the backpack sides, through compression straps; or diagonal front fixation with specific webbings.



FEATURES



SPLIT SHOULDER STRAP

Lightweight, split shoulder straps for comfort, breathability and improved freedom of movements during the activity



REGEN ROBIC RECYCLED NYLON RIPSTOP FABRIC

High tenacity and 60% greater tear resistance than standard nylon.



HYDRATION SYSTEM EXIT

Place the hydration system in the pouch on the back of your pack. Fasten the hydration system either with the sewn in hangers or velcro. Thread the hose through the hydration exit and secure it underneath the routers on the shoulder straps.



3 HEIGHTS ADJUSTABLE STERNUM STRAP

Slide the strap in the middle of your sternum to stabilize the pack to your body. Three different heights adjustments allow to find the best fit.



GENERAL INFORMATION



1. MAIN BENEFITS

We seek to design the best-possible solutions for mountain enthusiasts based on our philosophy of creating strong & light products. We understand our users' needs and provides the right features and benefits for them to enjoy their adventures:

STRENGTH & DURABILITY

Our design team carefully analyses the exact functions of each part of a backpack to define performance requirements, select an optimum combination of materials and engineer the strongest gear for the longest use.

VENTILATION

Sweating cools down the body via evaporation. Conventional backpacks stop this happening as their back panels prevent the ventilation sweat requires to evaporate. The wet back panels mean you get chilled. All Salewa backpack back panels are designed to ensure good ventilation.

LIGHTWEIGHT DESIGN

Our sophisticated design solutions use the best materials to minimize weight. Lightweight fabrics, buckles, straps and accessories also help keep weight down.

2. CARRYING SYSTEM

Salewa has three different carrying systems. Depending on size and area of use, its backpacks are equipped with an DRY BACK AIR, DRY BACK CONTACT or DRY BACK CUSTOM. Our DRY BACK AIR system maximizes ventilation and minimizes the backpack surface in contact with the body; the DRY BACK CONTACT system keeps the load barycentre of the backpack close to the body for maximum control on ascents and provides good ventilation through its air channels. DRY BACK CUSTOM is highly air permeable, lightweight and with a quick and easy height-adjustable back panel system for a customized fit.

3. ADJUSTING YOUR BACKPACK

HOW TO GET THE BEST FIT:

1. Loosen all straps (shoulder straps, load control straps, waist belt, compression straps) before you load the pack.
2. If your backpack has a back regulation system, follow the instructions in the table to identify your torso length and set the correct back length.
3. Pull in the waist belt so that it sits just above the pelvis. Make sure that your iliac crest is centred between the waist belt padding. Close the buckles. Secure the loose ends of the straps.
4. Tighten (but don't overtighten) the shoulder straps until the carrying system meets the back. The attachment point of the shoulder straps should be about one inch below the seventh vertebra (C7). If necessary, readjust the back length.
5. If your pack has them, tighten the load control straps at the top of the shoulder straps.
6. Close and adjust the length of the chest (sternum) strap, and make sure it sits at the right height (at your sternum). A snug fit will help stabilise the pack. Take care not to create pressure points.
7. Check the load control straps again and ensure that your shoulder straps fit snugly around your shoulders.

TORSO MEASUREMENT	FIXED BACK LENGHT SIZE	CUSTOM FIT PRO BACK LENGHT MALE	CUSTOM FIT PRO BACK LENGHT FEMALE
38/40 cm	SHORT		SHORT
40/45 cm		SHORT	MEDIUM
45/50 cm	REGULAR	MEDIUM	LARGE
50/53 cm		LARGE	

GENERAL INFORMATION



4. PACKING YOUR BACKPACK

We recommend that you never pack more than 70% of your pack's volume. The extra room will come in useful if you have to unpack the contents and quickly pack them again.

- Space is limited, so it makes sense to pack systematically. This also makes your pack easier to carry. We recommend packing as follows: store lighter items, such as your sleeping bag and reserve clothes at the bottom; keep heavy items such as your cooking equipment or tent in the area of your upper back.
- Store valuable item such as documents, money, keys etc. in the dedicated pocket.
- Pack items you want close to hand at the top or in outside pockets: extra clothing, water bottle, maps, compass, snacks, etc.
- Fasten longer items, such as tent poles or trekking poles, to the side of the pack using the compression straps – and store the loose ends away in the side pockets. If required, large and bulky items (sleeping mat, tent, etc.) can be attached on the outside using compression straps.
- Store your cooking equipment, food, spare clothing and other items in the main compartment. Keep your most frequently used gear close to the top. Less frequently used kit (e.g. bivouac sack) can stay at the bottom.
- The separate bottom compartment is meant for your lighter items, such as your sleeping bag or spare base layers.

5. CARE AND MAINTENANCE

Backpacks do not need much care and maintenance. Stains can be cleaned off with water. Lubricate the zippers occasionally with silicone or oil. Although, if you use your pack in dusty areas, don't use silicone or oil as they attract dust. If your zippers stick, clean them with an old toothbrush.

6. CONTACT

Got a question? Need a suggestion?
Please contact us at: www.salewa.it/it/contacts/